

# SEA-A LOVE SONG

동해의 연가

Music by Wayne Chai  
채완수 작곡

류재영 시

Andante ♩ = ca 62 - 72

The piano introduction is in 3/4 time with a key signature of one sharp (F#). It features a melody in the right hand and a bass line in the left hand. The right hand starts with a half note G4, followed by quarter notes A4, B4, and C5. The left hand starts with a half note G3, followed by quarter notes A3, B3, and C4. The piece is marked *mp* and *legato*. The tempo is *Andante* with a metronome marking of approximately 62-72 beats per minute. The introduction concludes with a *rit.* (ritardando) marking.

4 *mf*

Our mem 'ries \_\_\_\_\_ live on the beau-ti-ful shore, sea-side brim \_\_\_\_\_  
우 리 - 의 - - - 추 - 억 은 - 아 름 다 운 - 동 해 의

The vocal line begins at measure 4. It is marked *mf* (mezzo-forte). The melody consists of quarter and eighth notes. The lyrics are written below the notes. The line ends with a *mp* (mezzo-piano) marking and an accent (>) over the final note.

The piano accompaniment continues from the introduction. It features a melody in the right hand and a bass line in the left hand. The right hand starts with a half note G4, followed by quarter notes A4, B4, and C5. The left hand starts with a half note G3, followed by quarter notes A3, B3, and C4. The piece is marked *mf*. The accompaniment concludes with a *mp* marking and an accent (>) over the final note.

8

— of the East Sea; \_\_\_\_\_ Time af-ter time, \_\_\_\_\_ greet-ing me are the rocks, - huddl'd to-ge-ther—  
- 해 - 변 - - 언 제 - 나 - 언 제 나 만 남 은 - 웁 - 기 종 기

The vocal line begins at measure 8. It is marked *mp*. The melody consists of quarter and eighth notes. The lyrics are written below the notes. The line ends with a *subito p* (subito piano) marking.

The piano accompaniment continues from the previous section. It features a melody in the right hand and a bass line in the left hand. The right hand starts with a half note G4, followed by quarter notes A4, B4, and C5. The left hand starts with a half note G3, followed by quarter notes A3, B3, and C4. The piece is marked *subito p*. The accompaniment concludes with a *subito p* marking.

12 *mf* *p*

float-ing on the wave. Each of our minds and hearts are deep and  
 떠 있는 바 -- 우 서로의 마음은 - 그 깊 - 고

16 *mp*

wide as East Sea; The frag - rance that per-mi-ates from you, None o-ther  
 넓은 바 - 다 - 그 대 - 의 - 향 - 기 - 로 움 은 짹 짹한

20 *mf*  $\text{♩} = \text{ca } 50 - 66$

than sal - ty sea. De - sires, un-ful-filled yearn - ings,  
 바 - 다 - 내 - 음 못 다 - 한 - 아 쉬 움 은

24

— as thought the waves,— crash ing waves,—— crash ing waves,—— a-against the cliff,—  
 - 오 늘 - 도 - 부 서 지 - 는 - 파 도 - 파 도 처 럼

*mp*

28

— try-ing to break it,—— try - ing to high,— ri-sing high,—— crash-ing wave.  
 - 절-벽을 깰 듯 - 바위를 깰 듯 - 치솟 는 - 물 - 방 울

*cresc f*

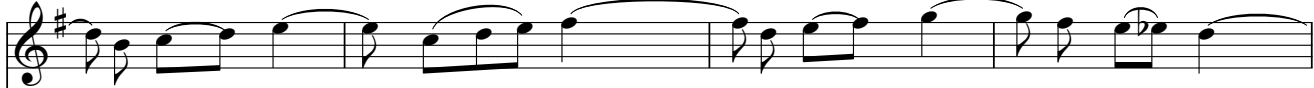
32

*a tempo*

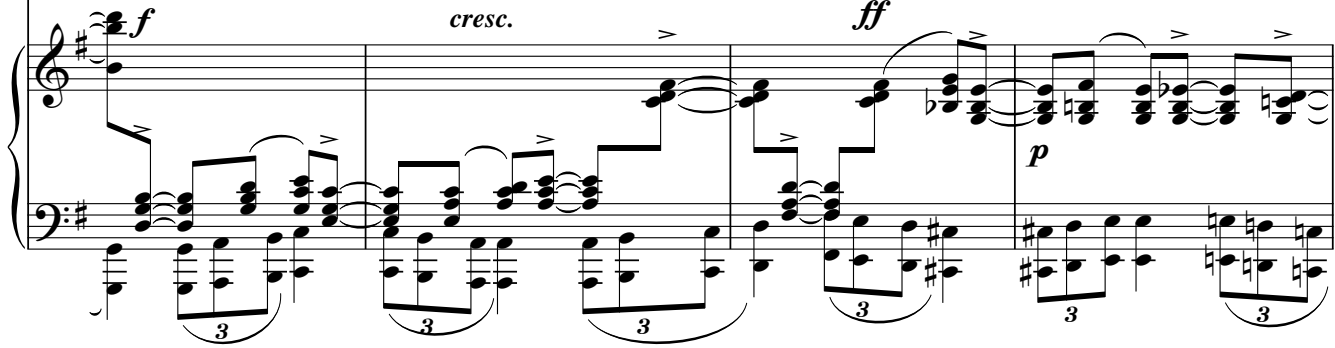
Deaf - 'ning roar of yours—— the wave,—— Jade - blue\_ wave,—— of East\_ Sea,  
 을 - 러 퍼 지 는 - 소 리 - - 파 - 도 - 여 - 파 도 - 여

*mf* *rubato* *f*

36



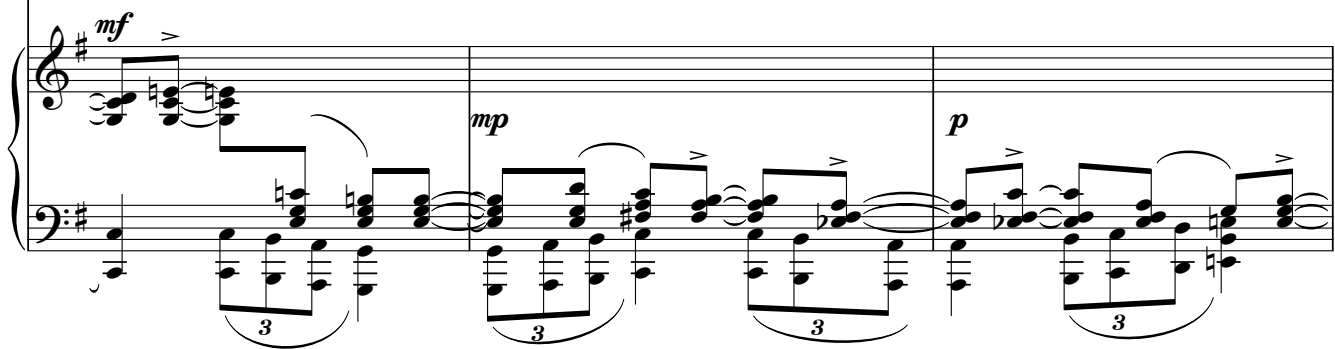
— of East - Sea, — Jade - blue — of East - Sea, — Jade - blue wave, —  
- 동 해 - 의 - 푸 - - 른 - 파 도 - 여 - 파 도 - 여



40



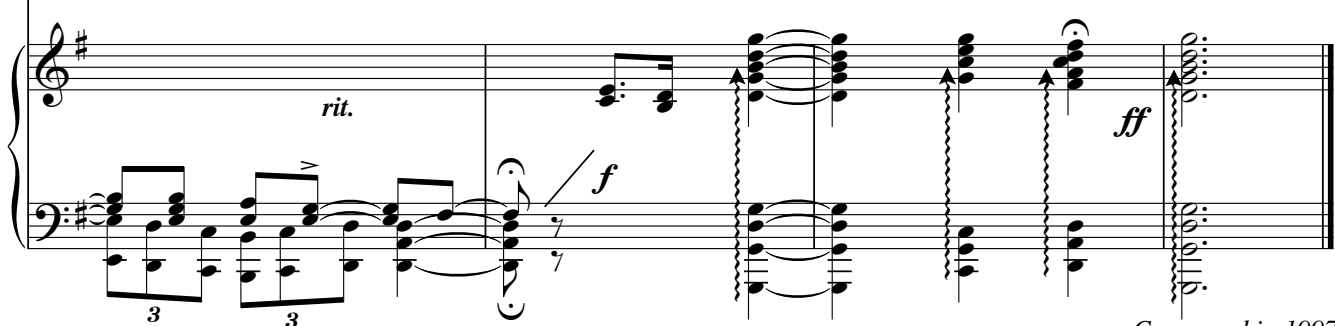
— Jade - blue — wave, — of this, my soul, — Jade - - blue —  
- 파 도 - 여 - 내 마 음 의 - 푸 - - 른



43



— wave, you — are — of my heart, — Jade-blue wave of my heart.  
- 파 도 - 여 - 내 마 음 - 의 - 푸 른 파 도 여



Composed in 1997